

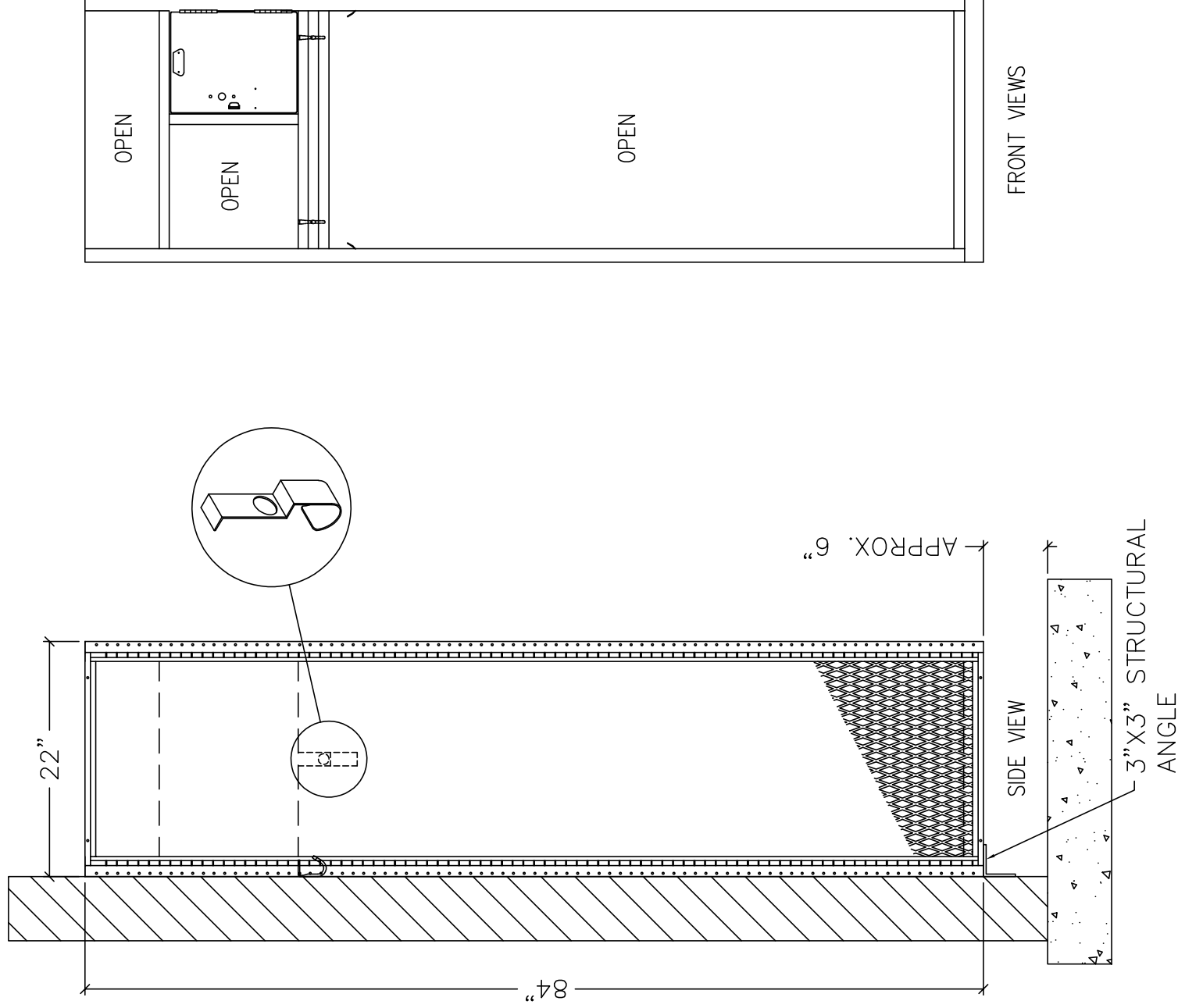
"WALL MOUNTED MODEL" TURN-OUT LOCKER (TGBN42(84)-1C-G)

TURN OUT LOCKER SPECIFICATION

COMPONENT	GAUGE	MATERIAL	REMARKS
FRAME	16	GALVANNEAL C. R. S.	SOLID - HOLLOW-T
TOPS	16	GALVANNEAL C. R. S.	SOLID
BOTTOMS	16	GALVANNEAL C. R. S.	DIAMOND PERFORATED
SHELVES	16	GALVANNEAL C. R. S.	SOLID
SIDES	13	COLD ROLLED STEEL	1/2" FLATTENED EXPANDED METAL
BACKS	18	GALVANNEAL C. R. S.	SOLID
SECURITY BOX DOOR	14	GALVANNEAL C. R. S.	PLAIN
SECURITY BOX DOOR HANDLE		ZINC PLATED C.R.S.	FRICTION CATCH DOOR PULL
BOX DOOR HINGE	13	COLD ROLLED STEEL	3 1/2" 7 KNUCKLE PIN TYPE

GROWTH FACTOR		
1-WIDE	2-WIDE	
24"	24 3/4"	48 1/4"

ALL LOCKERS INCLUDE HAMMERTONE FINISH



**FOR SUBMITTAL
USE ONLY**
SUBJECT TO APPROVAL



CAUTION: IN THE INTEREST OF SAFETY, ALL LOCKERS AND SHELVING MUST BE SECURELY ANCHORED TO THE FLOOR AND/OR WALL.
THIS DRAWING AND THE INFORMATION ON IT IS THE CONFIDENTIAL PROPERTY OF LIST INDUSTRIES, INC. AND SHALL NOT BE COPIED OR DISCLOSED TO OTHERS WITHOUT WRITTEN PERMISSION. ONLY LIST INDUSTRIES RESERVES THE RIGHT TO ALTER ANY DESIGN, ANY UNAUTHORIZED MODIFICATIONS RELEASES LIST INDUSTRIES FROM ALL LIABILITIES.

Customer: SIERRA SCHOOL EQUIPMENT

Customer Order Number:

Description: WALL MOUNTED TURN-OUT LOCKER

Drawn By: JFA

Date: 11.10.2020

Scale: NONE

Page Number:

Sheet 1 Of 1

Revision:

Folder Number: